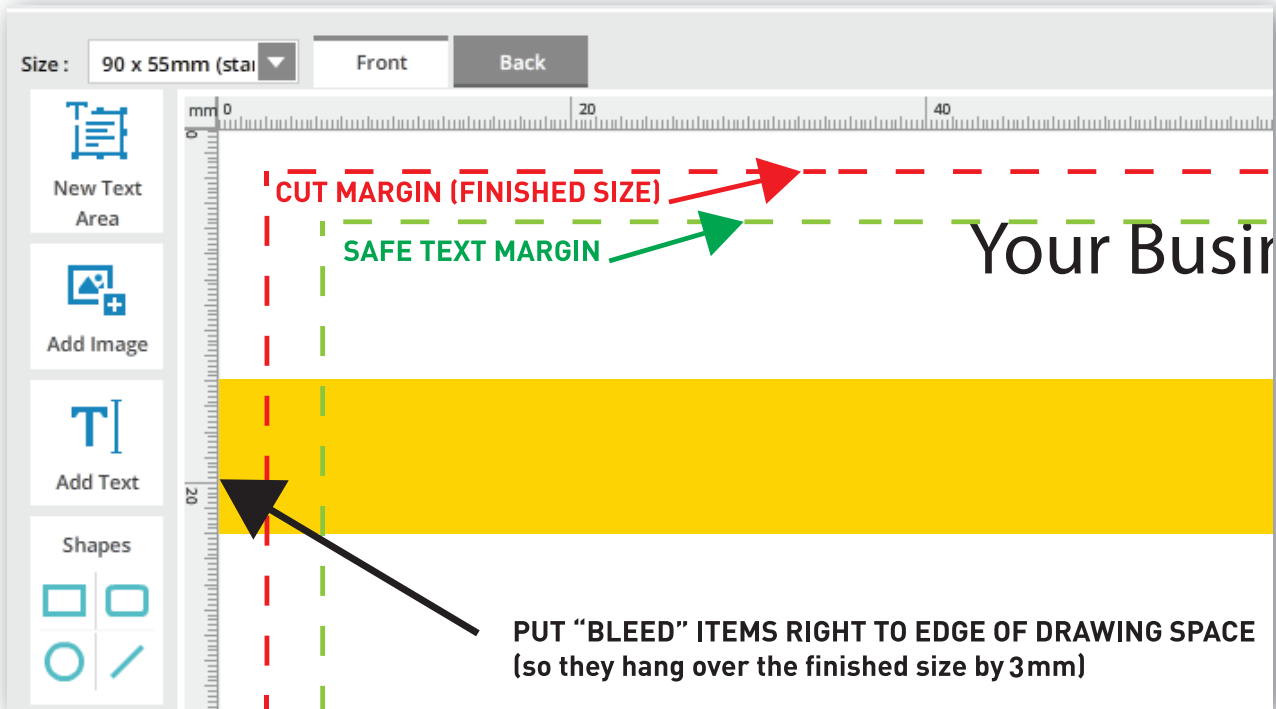


For best results, use professional vector programs like Illustrator, Coreldraw, or similar. Home programs like MS Word/Publisher don't have the right tools or colour palette. MS Excel is for spreadsheets. MS Powerpoint is for screen slideshows. PhotoShop is for editing bitmap images.

① Use the **allBIZ ONLINE EDITOR**

Put **bleed*** items right to the very edge of the drawing space (they should go beyond the red CUT MARGIN)



* **BLEED:** any object that goes right to the edge of the document. The object must actually go **BEYOND** the finished size by 3mm ("bleed over" the edge).

② Use **ILLUSTRATOR** (or other vector software)

- 1 - **OPEN** the Illustrator or PDF TEMPLATE you want to use
- 2 - **Follow** the RED notes on the first layer

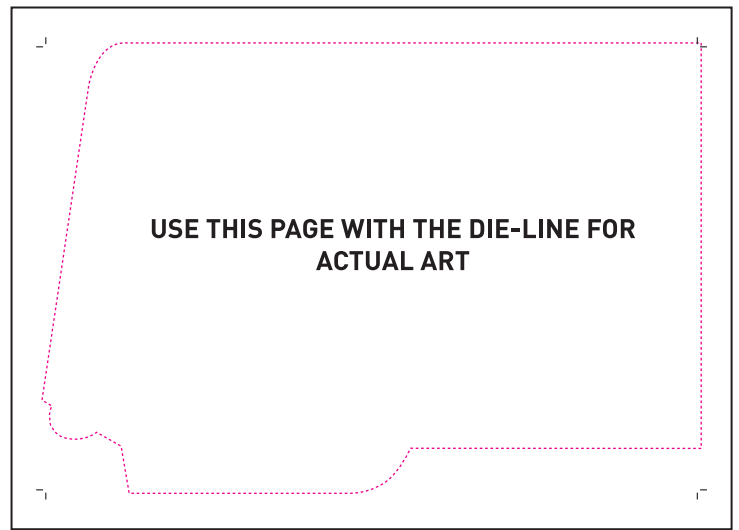
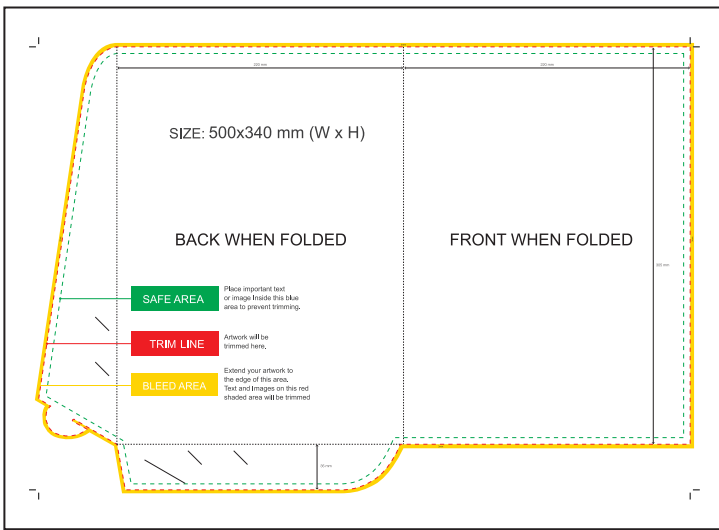
SEE PDF TEMPLATES EXAMPLE PG 2

MAKE SURE YOUR FILES ARE PRINT READY!

- PDF** (PDF/X-1a is better) - for double-sided, Page 1 = Front, Page 2 = Back
- FONTS** embedded (or converted to Curves/Paths/Outlines)
- IMAGES** 600 to 300ppi (less resolution and they will print fuzzy and blocky)
- CMYK** colour only (do not use RGB or Spot or mix them)
- FLATTEN** transparencies/layers (or you will get odd stripes/blocks)
- BLEED** - 3mm, and 3mm Safe Area away from edge for text
- TRIM BOX** (for bleed jobs) - set to final cut size (or your job will cut wrong)

Your job could be **ruined** by bad files. Fuzzy, wrong colours/fonts, missing bits and more. Wrong files could be **rejected/charged a processing fee.**





NOTE: bleed in the templates is shown shaped to follow the die-line, but if you have solid colour/background you can use a rectangle of colour.

See GUIDES and TEMPLATES for details

Submit TWO files: 1 with NO die-line, and one WITH a die-line.



PRINT FILE (NO die-line)



REFERENCE FILE (WITH die-line)