

PRODUCT SETUP FACT SHEET

FITTED



LOOSE



STRETCHED



4ft - 3 SIDED TABLE THROW

4ft - 3 sided (loose, fitted, stretched)

GENERIC FACTS:

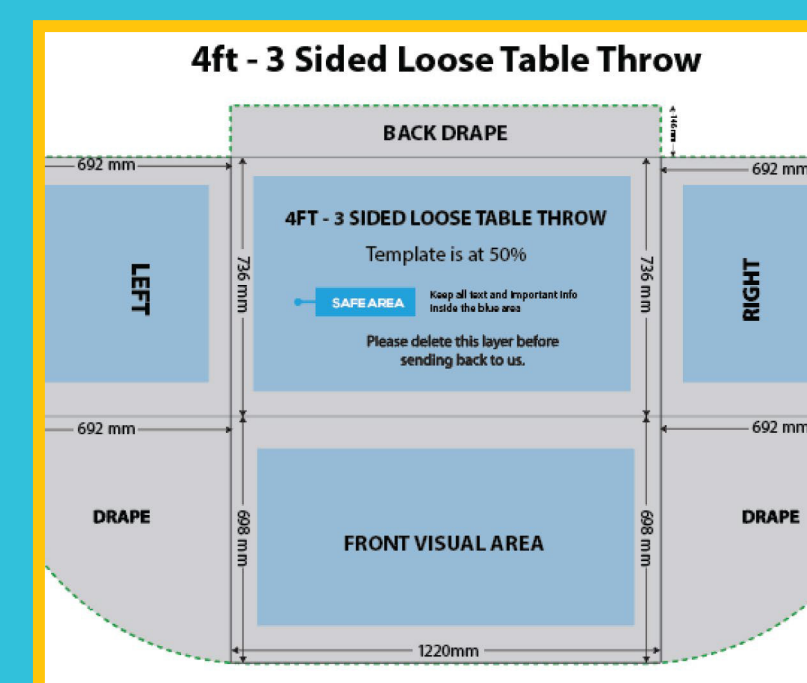
- Convert all text to outlines
- No bleed required
- File provided in CMYK only
- Our recommended rich black break down in 40%C, 40%M, 40%Y, and 100%K
- Supplied as press ready PDF

IMPORTANT DESIGN NOTES:

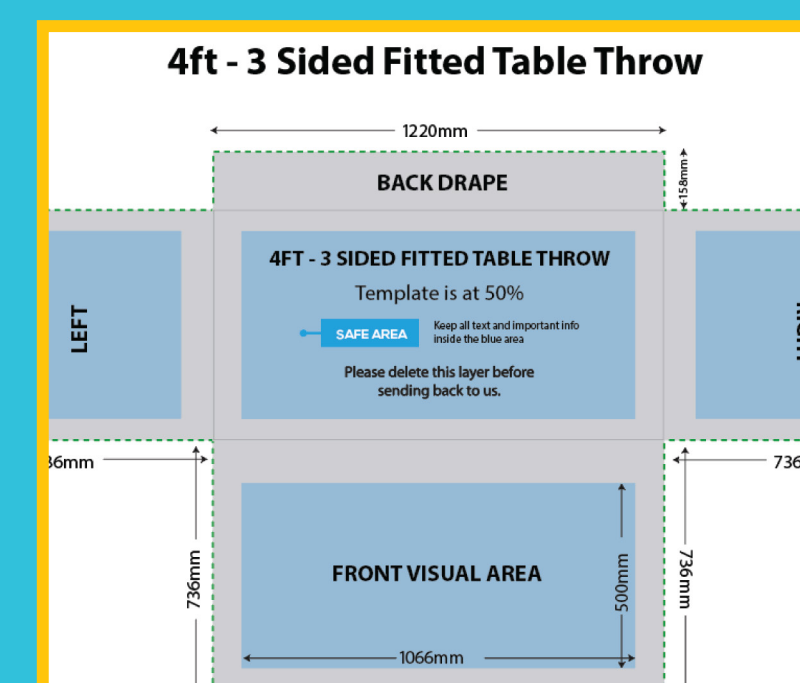
- As per industry standard colours may vary up to 5%
- For the best colour accuracy please refer to a Pantone colour guide and not your screen.

PRODUCT SPECIFICS:

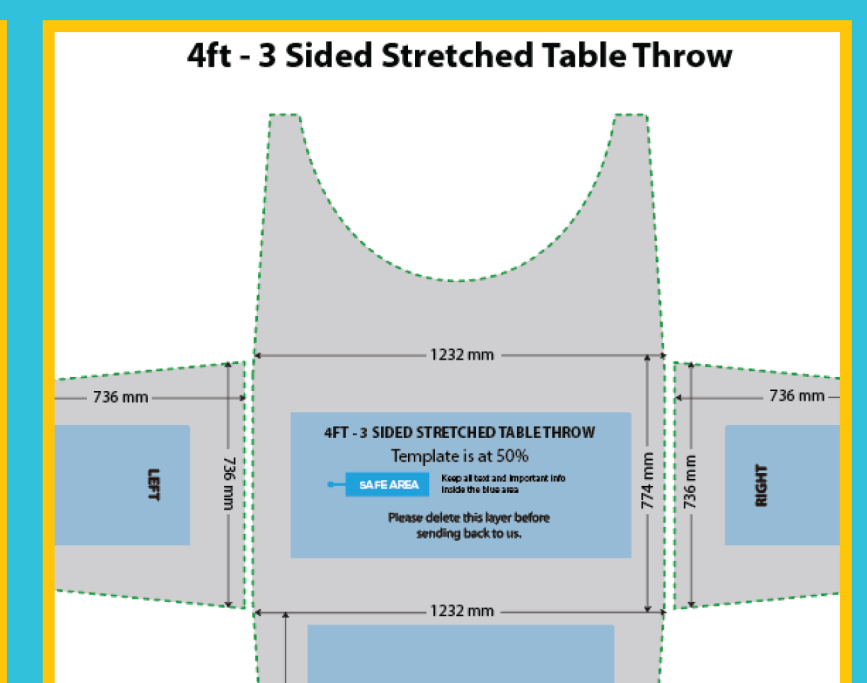
- No bleed required
- Template is at 50%
- Use of vector image recommended



Loose
page 2



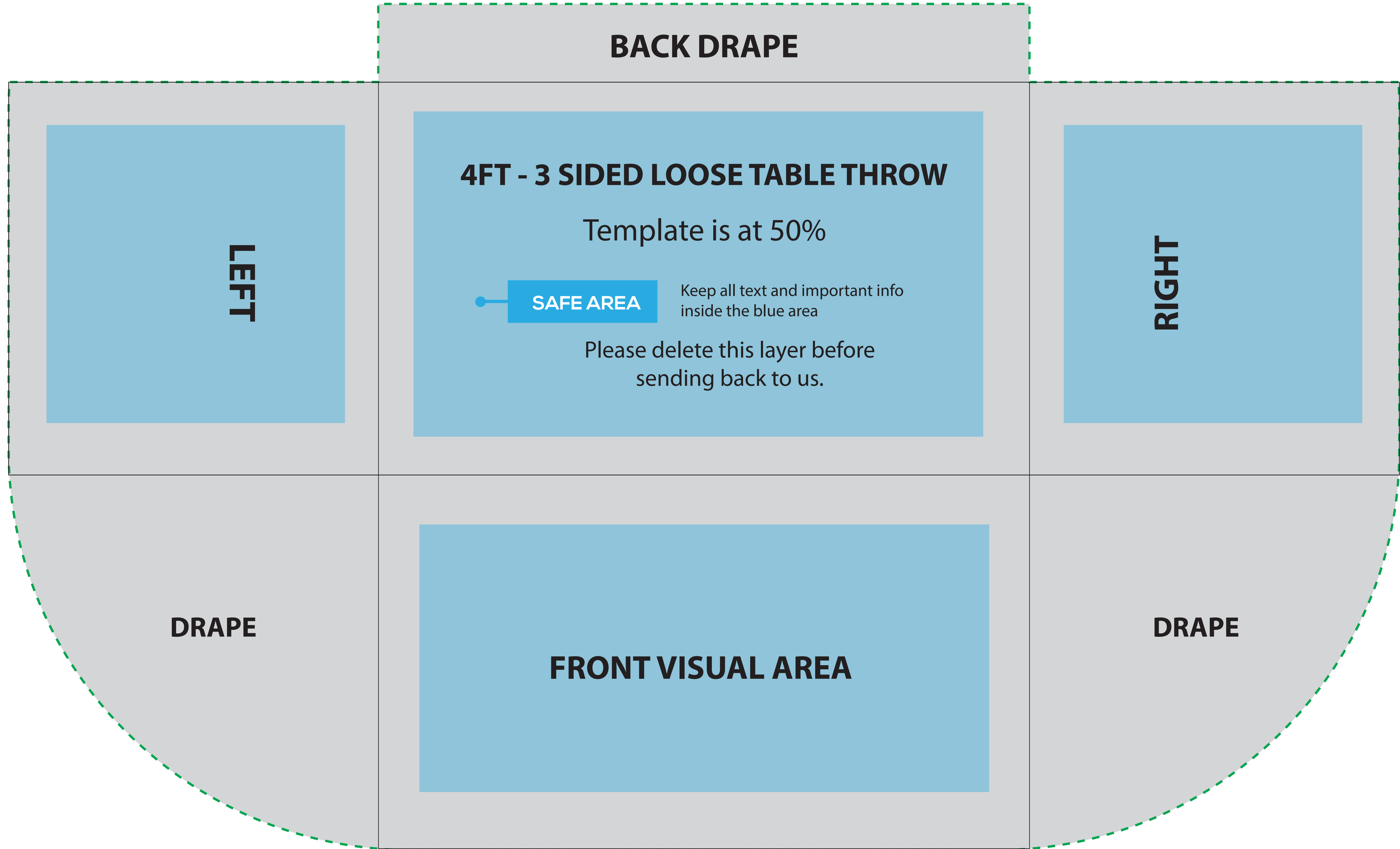
Fitted
page 3



Stretched
page 4

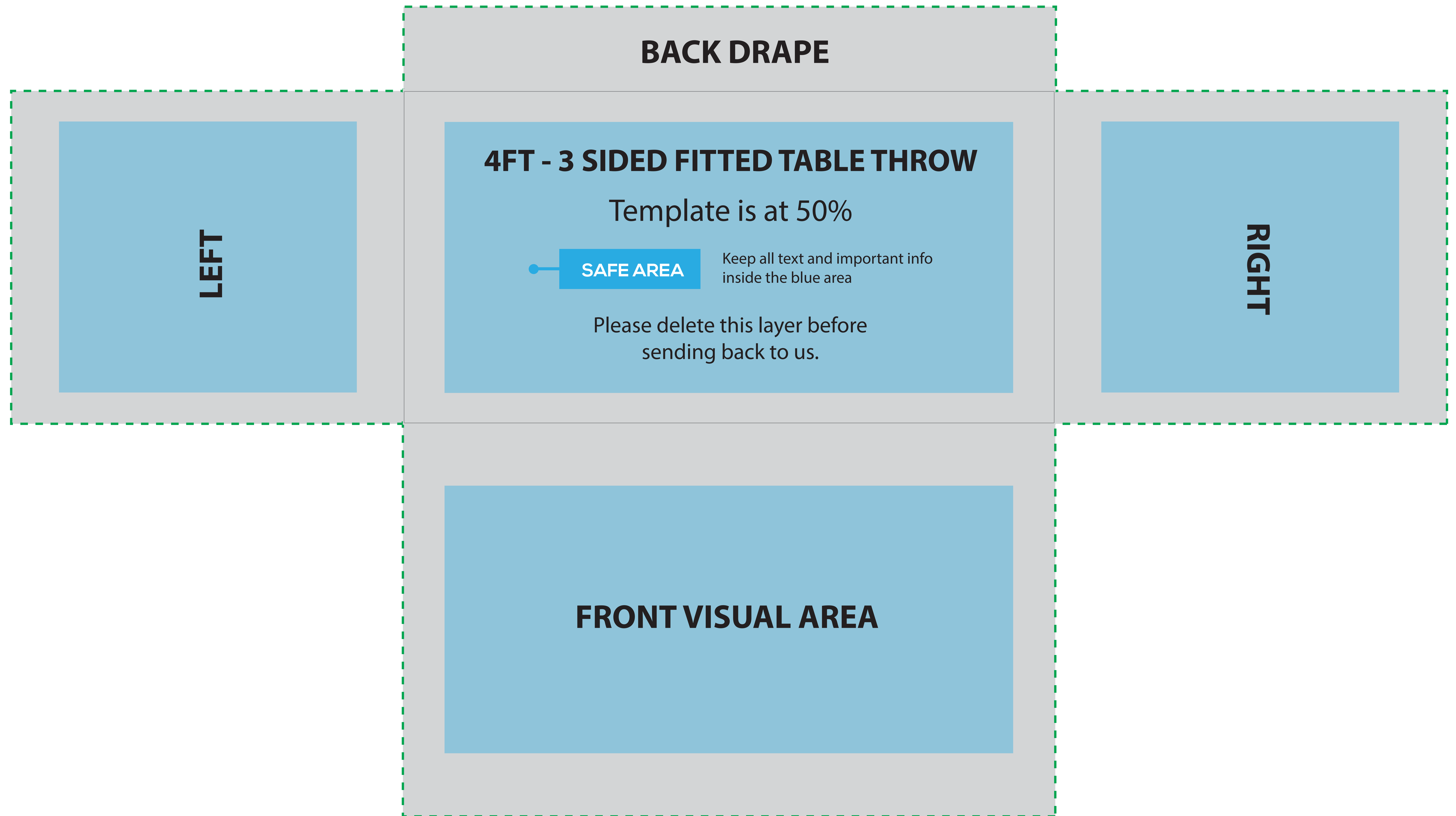
4ft - 3 Sided Loose Table Throw

To fit standard (x) foot trestle table size as follows: 4 foot: 1220mm W x 610mm D x 740mm H



4ft - 3 Sided Fitted Table Throw

To fit standard (x) foot trestle table size as follows: 4 foot: 1220mm W x 610mm D x 740mm H



4ft - 3 Sided Stretched Table Throw

To fit standard (x) foot trestle table size as follows: 4 foot: 1220mm W x 610mm D x 740mm H

